

3970 Gordon Head Road
Victoria, B.C. V8N 3X3

250 477 6977 (Phone)
250 477 0277 (FAX)

General Email: mtdouginfo@sd61.bc.ca
Attendance: mtdougattendance@sd61.bc.ca
Website: <https://mountdoug.sd61.bc.ca>



Welcome to Mount Doug!

MOUNT DOUGLAS SECONDARY SCHOOL

Principal's Message

Summer, 2015



I hope this summer finds you well and looking forward to the upcoming school year. We are busy making plans for school start-up on September 8th.

In beginning the new year, we welcome our new grade 9 students and those students joining Mount Douglas for the first time. Aside from engaging in academic pursuits, please join our already very active student body by getting involved in a variety of extra-curricular activities in the arts, athletics and leadership. Refer to our school website at <https://mountdoug.sd61.bc.ca> for more information.

The 2015/2016 school year promises to be exciting. We encourage all students to find a way to get involved in our school and to share your talents and abilities.
See you in September!

Shawn Boulding,
Principal

TAKE A TOUR...

Guided tours of the school are being offered on
Thursday, September 3. Drop in between
9:00 a.m. and 11:00 a.m.

New Students

School Start Times

GRADE 9 STUDENTS

Grade 9 students please go directly to the gym for an assembly at **9:30 a.m., September 8th.** You will be dismissed at 11:30 a.m.

Wednesday, September 9th is a full day— **8:30 a.m. to 3:04 p.m.**

GRADE 10/11/12 STUDENTS

Grade 10, 11 and 12 students please go to your homeroom at **12:00 noon on September 8th.** You will be dismissed at 1:00 p.m. (Homerooms will be posted in foyer)

Wednesday, September 9th is a full day for all students—**8:30 a.m. to 3:04 p.m.**

LEADERSHIP/PEER TUTORING

Students enrolled in the **Leadership Course** (Grade 10 - 12) are scheduled to have their first class meeting on **Tues. Sept. 8th**, at 11:00 am in the multi-purpose room.

Grad Leadership will first meet **Mon., Sept. 14th** at lunch in room 122 and **Peer Tutoring** on **Mon., Sept. 14th** in room 201.

Some fast facts about Mount Doug...

- THIS YEAR WE WELCOME OVER 220 GRADE 9 STUDENTS TO OUR SCHOOL AS WELL AS MANY NEW MOUNT DOUG STUDENTS ENTERING GRADE 10, 11 AND 12.
- THERE ARE MORE THAN 150 INTERNATIONAL STUDENTS JOINING US. OVER 50 DIFFERENT COUNTRIES ARE REPRESENTED HERE AT MOUNT DOUG.
- APPROXIMATELY 1050 STUDENTS WILL ATTEND MOUNT DOUG IN SEPTEMBER.
- MOUNT DOUG HAS TWO SISTER SCHOOLS—ONE IN AVIGNON, FRANCE AND THE OTHER IN MORIOKA, JAPAN.

Inside this issue:

COURSE CHANGES	2
ATHLETICS	2
SCHOOL INFORMATION	3
SCHOOL EXPENSES	3
TIMETABLE	4
YOUTH PASS INFORMATION	4

Parents/
Guardians

Grade 9 & New Student Parent/Guardian Information Evening—6:45 - 7:30 p.m., Thurs., September 10th

(all parents/guardians of students new to Mount Doug this year are invited)

RAMPAC Social —7:30 p.m. Thurs., September 10th—MD Library

This will follow the Grade 9 & New Parent Information meeting

(Get involved with your child's school—all parents/guardians welcome)

Meet the Teacher Night—7:00 p.m. - 8:30 p.m. Thurs., September 24th

(all parents/guardians welcome—find out about the school and learn about your child's courses from his/her teachers)



Rambo!

Welcome to Mount Doug!

Course Changes

Students in grades 9—12 will be provided their timetables on the first day of school.

For those students requiring changes to their timetables, they will be called down to the counseling alcove during the first week of school. These students will need to provide parent consent to any proposed changes to their timetables.

Please understand that changes in student timetables are considered for unique needs and only considered in extra-ordinary circumstances. We have very limited flexibility in our schedule to make changes at this point in the school year.

NEW STUDENT TOURS
JOIN US THURSDAY,
SEPTEMBER 3RD FOR A GUIDED
TOUR. DROP IN BETWEEN
9:00 AND 11:00 A.M.
LEADERSHIP STUDENT GUIDES
WILL BE ABLE TO SHOW
YOU AROUND THE SCHOOL.

TOURS WILL TAKE ABOUT
15—20 MINUTES.



Athletics

The Rams Athletics program provides a wide variety of sporting opportunities for the students of Mount Doug. With three distinct seasons of play (Fall, Winter & Spring) students have the chance to participate in numerous sports across the school year.

We continually attract outstanding coaches with the focus on teaching fundamentals to the junior teams and progress to higher level tactics and training with our senior teams. Mount Doug sends many teams to Island and B.C. Championships and works hard to maintain its reputation as one of the top sports schools in the province.

SCHOOL TEAMS:

- Fall (Sept. to Nov.)**
- Cheerleading (Coed) - Jr./Sr.
- Cross Country - Jr./Sr.
- Field Hockey (Girls) - Jr./Sr.
- Football - Jr. & Sr.
- Rowing - Jr./Sr.
- Soccer (Boys) - Jr. & Sr.
- Swimming - Jr./Sr.
- Volleyball (Boys) - Jr. & Sr.
- Volleyball (Girls) - Jr. & Sr.



- Winter (Dec. to Feb.)**
- Basketball (Boys) - Jr. & Sr.
- Basketball (Girls) - Jr. & Sr.
- Curling (Boys & Girls) - Jr./Sr.
- Wrestling (Co-ed) - Jr./Sr.

- Spring (March to May)**
- Badminton - Jr. & Sr.
- Cycling (Co-ed) Jr./Sr.
- Golf - Jr./Sr.
- Rugby—Boys/Girls
- Soccer (Girls) - Jr. & Sr.
- Tennis - Jr./Sr.
- Track and Field - Jr./Sr.



*** Coaches are still needed for the 2015/2016 school year. Please contact Athletic Director, Ted Meldrum at tmeldrum@sd61.bc.ca or call 250 477-6977 if you are interested in joining our team.

School Information

Attendance

Teachers and students certainly know the demands of the semester system. Absences and lates create immediate problems. All students and parents are urged to consider attendance seriously. Developing a positive attitude and routine towards full attendance may be the most important decision made during your secondary school career. If a student is going to miss classes for a valid reason (for example: illness or a medical appointment) parents are asked to contact the school to excuse the absence. The email address to contact is mtdougattendance@sd61.bc.ca or if you don't use email, please call 250 477-5329.

Our Neighbours

We ask students to be responsible members of the neighborhood. Students need to be courteous to the families living around our school and be respectful of their property. Students who engage in conduct which disturbs, disrupts or damages the persons or property of the school neighbourhood may be subject to discipline. Like other schools, our goal is to reduce, recycle and reuse where possible. Please ensure that any waste is placed in the appropriate container both at our school and around our neighbourhood.

Electronic Equipment

It is strongly recommended that students NOT bring electronic devices to school. The school cannot be held responsible for the loss, damage or theft of personal equipment. Cell phone use during instructional time is not permitted.

Parent/Guardian Communication

Daily announcements, events and news items will be posted on our website. Important updates, attendance information, other notices from the school, RAMPAC and teachers will be sent out to email addresses provided. We have found email to be an excellent way to keep our parents/guardians informed so if you have an address available and are not already receiving emails from the school please consider filling out the required information on the form to be distributed on the first day of school or email the school at mtdouginfo@sd61.bc.ca providing the following information:

Parent/Guardian name; relationship to student (i.e. mom, dad, guardian etc.); student name(s). We are able to record ONE email address per parent/guardian contact.

RAMPAC (Mount Douglas Parent Advisory Council)

Traditionally, the Rampac generally meets in the Mount Doug library on the third Wednesday of each month. The first meeting of this school year, however, will take place on **Thursday, September 10th at 7:30 p.m.** (This is just after the Grade 9 and New Parent Information meeting) All parents and guardians of Mount Doug students are invited and encouraged to attend. Please drop in and say hello!

School Expenses

A School Deposits & Cost Sheet will be distributed on the first day of school. Each year we ask students to pay an optional student activity expense (\$35). New students are to pay a one-time refundable text deposit (\$25) and yearbooks are available for purchase (\$38).

For Grade 12's only there is a Grad Fee (\$65) which includes the recognition ceremony, reception and grad gown.*

*No one will be denied the opportunity to attend the ceremony due to economic hardship.

NOTE:

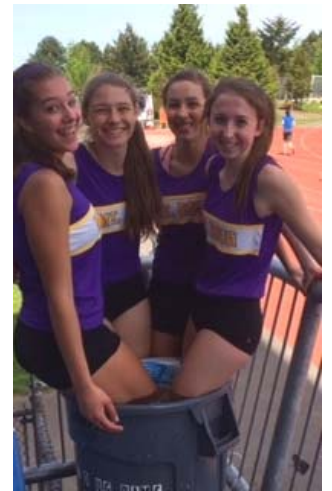
Expenses must not become a barrier to student participation in educational programs. No student will be denied participation in an educational program because of an inability to pay expenses.

Expense waivers are available where there is an inability to pay costs/deposits. Requests for waivers will be kept strictly confidential.

If you have any questions please do not hesitate to contact the principal, **Shawn Boulding**, Mount Douglas Secondary **250-477-6977 Ext. 159** or sboulding@sd61.bc.ca.

Payment is by cash or cheque. Cheques should be payable to Mount Douglas Secondary.

Lockers will be signed out in homerooms.



MAKE YOUR TIME
MEMORABLE AT MOUNT
DOUG BY GETTING
INVOLVED IN THE MANY
ACTIVITIES AND
OPPORTUNITIES
AVAILABLE TO YOU!



MOUNT DOUG OFFERS
MANY EXTRA-
CURRICULAR ACTIVITIES
INCLUDING THE 30-
HOUR FAMINE, CHESS,
CHEERLEADING, ECO
CLUB, FOOD DRIVE, FREE
THE CHILDREN, IMPROV
TEAM, MULTICULTURAL
WEEK, RECYCLING,
SPORTS, TALENT SHOW,
YOUTH FOR CHANGE &
INCLUSION AND MORE!



3970 Gordon Head Road
Victoria, B.C. V8N 3X3

Phone: 250 477 6977
Fax: 250 477 0277

General E-mail Inquiries:
mtdouginfo@sd61.bc.ca
Attendance Inquiries:
mtdougattendance@sd61.bc.ca
or 250-477-5329

Check out our website
<https://moundoug.sd61.bc.ca/>



SCHOOL SUPPLIES Students - Please bring pencils/pens and lined paper to school. Individual teachers will let you know about other additional suggested school supplies for their classes (if applicable).

Timetable
Mount Douglas Secondary School

	MONDAY	TUESDAY	WEDNESDAY	THURSDAY	FRIDAY
8:30 - 9:52	1	2	1	2	1
	B R E A K 9:52 - 10:00				BREAK 9:37-9:45
10:00 - 11:22	2	1	2	1	2
	LUNCH 11:22 - 12:12				LUNCH BREAK 10:53-11:23
12:12 - 1:34	3	4	3	4	3
	B R E A K 1:34 - 1:42				BREAK 12:38-1:45
1:42 - 3:04	4	3	4	3	4

YouthPass PHOTO SHOOT | ONE DAY ONLY!

Mount Douglas High School
Monday, September 14
11:15 - 12:30

The YouthPass is a photo bus pass for youth, aged 6 to 18 years, offering unlimited travel throughout the transit region. For added convenience to students and families, BC Transit will take YouthPass photos at your school for one day only.

For the school photo shoot, the student **must** bring:

- a cheque for \$315.00 made out to BC Transit
- valid I.D. that shows the student's date of birth
- a completed application form (attached to your September newsletter). The form must be signed by a parent or guardian.

YouthPasses will be distributed by the school office at the end of September.

This YouthPass is valid from Oct 1, 2015 - Jun 30, 2016
Visit www.bctransit.com for details about other YouthPass options.

Linking Communities, Businesses & Lifestyles



ENJOY THE REST OF THE SUMMER!

Mount Doug Healthy Foods at Lunchtime

To help with lunch options during the year, various groups in the school provide food for purchase at lunchtime. While some can be pre-ordered for the semester, there is always food for sale on any given day.

First semester choices will be announced when available, always with vegetarian options.

(Rambucks is also open daily at lunch selling beverages, granola bars, bagels, soup etc.)